

# Automated Bed Bug Detection System

**AV Delta Five™**

We stop bed bugs. Before infestation.



## Sleep tight. We'll make sure the bed bugs don't bite.

### The world's most advanced bed bug detection system

The Delta Five™ Automated Bed Bug Detection System is designed to find a bed bug before the bug finds a guest. We stop bed bugs the way they come in—one or two at a time—and prevent infestations before they can start.

### Early detection and elimination are critical

If you own or manage a hotel—you either have bed bugs now, or will have bed bugs in the future—because guests unknowingly keep bringing them in. A single undetected egg-bearing female can lay hundreds of eggs in her lifetime and can mate with her offspring—leading to an infestation.

### A new and better way

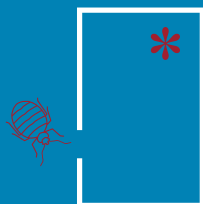
The Delta Five system can find a single bed bug before guests, hotel staff, pest management providers or canines. Unlike reactive and expensive heat-treatments or spraying, the Delta Five eLure™ electronic lure, delivers proactive 24/7 monitoring of guest rooms to attract and trap the bugs. A notification is instantly sent over WiFi to hotel staff via text or email. Our cloud-based system retains capture data and enables you to track trends and forecast potential issues.



**There is NO WAY to keep bed bugs out. Guests keep bringing them in. The solution is early detection.**

## Attract

Electronic lure works 24/7. Bed bugs are most active at night.



## Trap

Using computer vision, we detect the bed bug & trap it.



## Alert

WiFi-connected device instantly notifies you of a capture by text or email.



# Device Manager



The Delta Five Device Manager portal allows you to manage your eLure devices across all properties. A cloud-based system means it is secure, resilient and you can access information for any property, from any browser, any time, and anywhere.

## Device Status

- WiFi signal strength & connection status
- Biological Attractant Cartridge (BAC) age
- Daily synchronization report with images

*Allows you to ensure all devices are always protecting your guests.*

## Instant Notification

- Capture image and room/bed information sent to all your devices
- Automated capture tracking ticket generation

*Immediately lets you know when a bed bug is trapped and helps you manage your response.*

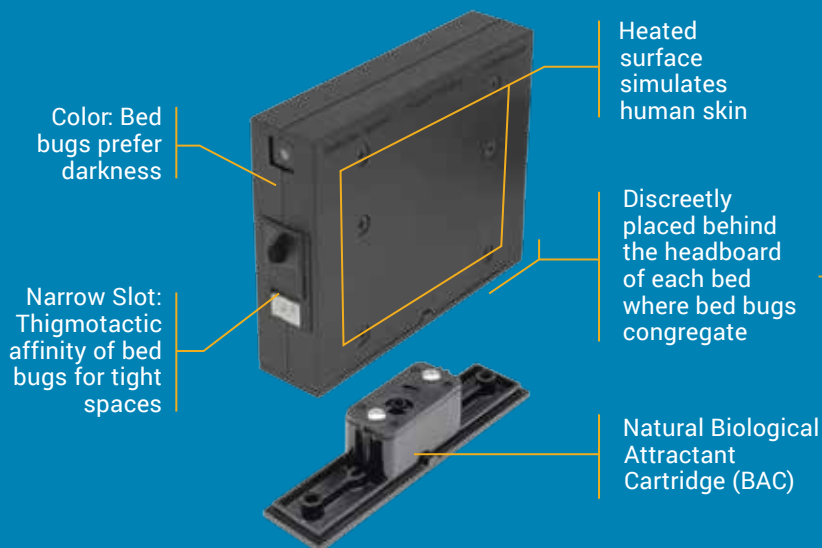
## Electronic Pest Management Record

- Stores data for all properties
- Historical capture and response data

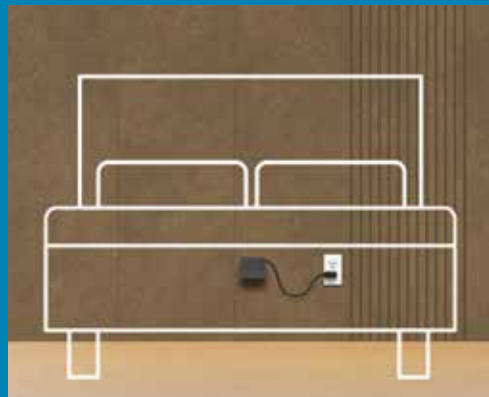
*Enables pest activity analysis and trend tracking. Manage risk and liability/litigation defense with real data.*

# eLure: electronic lure

## Five Behavioral and Biological Attractants



The Delta Five eLure fits discreetly behind the bed. It's silent, odorless and your guests will never know it's there.



## Protect your guests, your reputation, and your bottom line.

The Delta Five eLure is transforming how hotels deal with bed bugs. Schedule a demo and see for yourself how Delta Five can stop bed bugs before infestation. We'll demonstrate installation, employee training, dashboard configuration, how to generate reporting, and present an ROI case tailored to your property.

**Delta Five™** We stop bed bugs. Before infestation.

866.255.3762 | sales@deltafive.com | deltaxfive.com | 4140 Parklake Avenue, Suite 530, Raleigh, NC 27612

© 2019 Delta Five Systems, Inc. All rights reserved. For informational purposes only. Not a warranty or specification. Delta Five, eLure, and the Delta Five logo, are trademarks of Delta Five Systems, Inc.

